

# TRESU

Coater designed for short-run print jobs

## TRESU iCoat II



Next generation coating technology

# Digital & modular-for short-run print jobs

TRESU iCoat II is designed for fast job changes and lean sheetfed digital printing. Responding to customer demands, we now present a stand-alone coater, that also matches digital printing requirements for fast job changes and the ability to turn on a dime, when switching to a new task.

On top of this, the TRESU iCoat II coater is designed on a modular platform, on which you can combine a range of different modules to configure the machine exactly to your needs.

Buy what you need - no more, no less.



## Efficient design features for short-run digital print jobs

- 30-second job change with fast sleeve change technology - no tools required
- HMI with recipe storage for frequent and complex job settings (PLC)
- Proof tray with on-the-run proofing
- Proven TRESU chamber doctor blade system and varnish supply
- Automatic cleaning at the push of a button

Media thickness:  
150-600mic/6-24pt.

Max speed:  
6,000 sheets/hour

Sheet size:  
Max: 750 x 530 mm/29.92"x 20.87"  
Min: 510 x 330 mm/20.08"x 12.99"

Varnish Type:  
UV and/or WB

Coating method:  
Full surface and selective coating  
High accuracy registration: ±200µ

## Versatile combi coater for general folding carton

To produce GFC often requires many different types of coating and the solutions is a combi-configuration with separate circuits for fast response to changes between WB and UV coating jobs.

- Dual varnish system with separate WB and UV circuits ensures secure fast changes between UV and WB jobs
- Flood and spot coating
- WB/UV anilox and plate sleeves included
- Efficient hot air dryer
- PLC for data management



## Single WB varnish coater for pharma applications

Traceability, inspection and individual marking of each individual unit are key design parameters in pharmaceutical packaging.

- Inspection conveyor module
- Single WB varnish configuration
- Coating knockouts (for bar codes, ID and QR codes) as well as glue flaps
- Ejection tray for rejected sheets
- Efficient hot air dryer
- PLC for data management





# Modular platform tuned to your needs

Choose the features you need now...

... add optional modules of your choice when needed

## Feeder module

For stand-alone operations

## Varnish system

WB, UV or dual system in separate circuits. WB or UV modules can be added later to an existing configuration

## Flexo coating system

Full surface or spot coating (WB and/or UV) with automatic cleaning

## Dryer module

WB: Efficient hot air drying system  
UV curing:  
High-performance UV lamp.  
Single: UV or WB  
Combi: UV or WB

## HMI

Fast and easy access to the touch-screen user interface (PLC for data management)

## Buffering stacker

Buffer for continuous coating – even when switching pallet

## Proof tray

On the run proofing for visual inspection and test samples

## Corona module

Improving surface adhesion

## Synthetic package

Synthetic (plastic/polymer), metallized, laminated board

## Extra pump capacity

For special, demanding applications/viscosities, - WB and/or UV

## Wide range of aniloxes

Protection coating  
Matte coating  
High-gloss coating  
Ultra-high gloss coating  
Special-effect coatings

## Inspection conveyor module

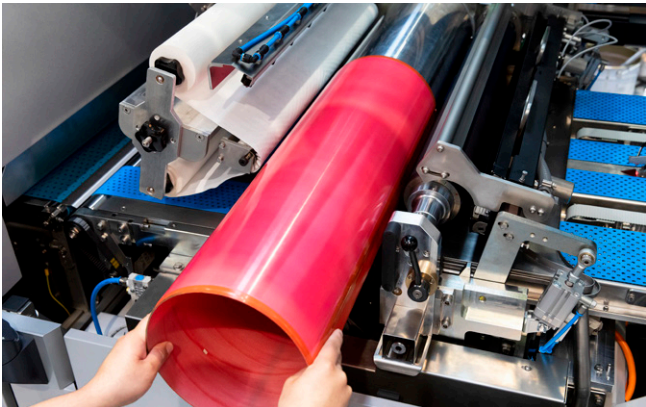
100% inspection – for pharmaceutical or counterfeiting demands



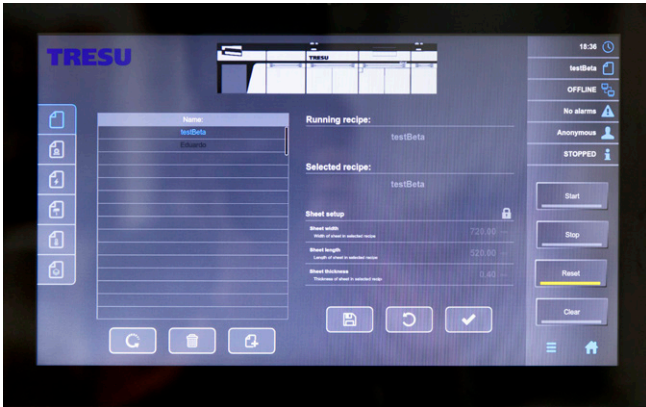


# TRESU iCoat II highlights

Efficient design for short-run print jobs with fast job changes



Fastest job change in the industry: 30 second sleeve change with no tools required.



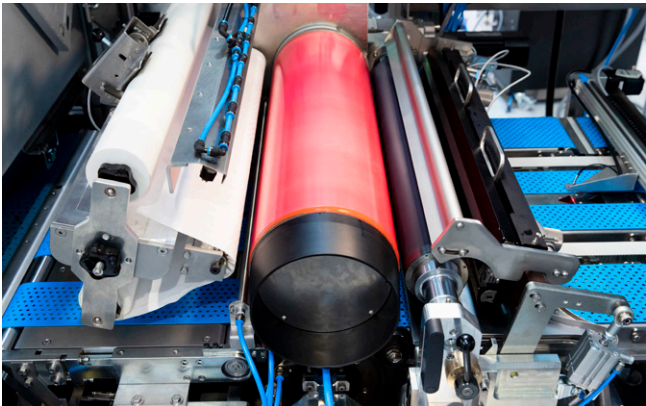
Fast set-up and easy job changes with HMI recipe storage: Complex job details recalled at the push of one button (PLC included).



Proofing on the run – means full test control, visual inspection and samples with no downtime.



Automatic cleaning at the push of a button: Separate WB and UV systems means faster cleaning, less down-time and less handling.



Proven TRESU flexo technology delivers printing efficiency designed to last.



Genuine TRESU chamber doctor blade system designed for fast handling and great performance.

# Technical specifications

Sheet size	Max. B2 Min. 510 x 330 mm   20.08" x 12.99" Max. 750 x 530 mm   29.92" x 20.87"
Image size	Max. 746 x 515   29.37"x 20.28"
Substrate range	Thickness: 150 - 600 µm   6 pt - 24pt
Substrate type	Paper, carton, metalized and laminated
General coating requirements Flexo coating unit	Full surface and selective coating (flood and spot)
Varnish type	UV, WB and special varnish
Speed	Up to 6,000 sheets/hour
Tolerances	+/- 0.4 mm   16 thousands in both directions
Cleaning	Automatic plate/blanket cleaning (WB) and pump, anilox and chamber system cleaning
Proof tray	Integrated proof/sample tray
Stacker	Automatic pallet change

TRESU anilox roller specifications					
Coating demand	Protection coating	Standard coating	High-gloss coating	Ultra-high gloss coating	Special effects coating
WB Roller name:	WB protection 10 cm³/m² 6.5 BCM/in²	WB matte coating 14 cm³/m² 9 BCM/in²	WB high-gloss (60*) 16 cm³/m² 10.3 BCM/in²		Special anilox
UV Roller name:	UV protection 11 cm³/m² 7.1 BCM/in²	UV coating 15 cm³/m² 9.7 BCM/in²	UV high-gloss (85*) 18 cm³/m² 11.6 BCM/in²	UV Ultra-high gloss (90*) 21 cm³/m² 13.5 BCM/in²	Special anilox
Applications	Rub resistance Print production Handling	Pharma Matte gloss	Packaging Decoration Seal coating Blister coating	Cosmetics Advertising Spot gloss Gift boxes	Examples: Scented coatings, metal pigments, glitter coatings, iriodin
*Gloss level depending on board and lacquer type					

Pls. go to [www.tresu.com/webshop](http://www.tresu.com/webshop) for information on genuine wear and tear parts, kits and consumables



TRESU is a highly specialized company offering flexoprinting machines and ancillary products and concepts for flexo, digital and offset printing as well as customer service and technical support.

TRESU has more than 35 years of experience and expertise in the development, production and maintenance of engineered solutions and supplies directly to end-customers, OEMs and partners worldwide.

TRESU has production facilities in Denmark and sales companies in USA, Germany, Italy, Japan and China as well as an international agency network providing local support and know-how.

**TRESU A/S**

DK-6000 Kolding  
DENMARK  
+45 7632 3500

**TRESU Americas**

635 Westport Parkway  
Suite 300  
Grapevine  
TX 76051  
USA  
+1 214 631 2844

**TRESU GmbH**

D-31157 Sartstedt  
GERMANY  
+49 5066 9174286

**TRESU Italia s.r.l**

I-20024 Garbagnate Milanese (MI)  
ITALY  
+39 0296 59 202

**TRESU Japan Co., Ltd.**

Osaka, 559-0033  
JAPAN  
+81 6 4703 0601

**TRESU China**

100062 Beijing  
CHINA  
+86 (0) 10 65911628

Venusvej 44 . DK-6000 Kolding . Denmark  
Tel.: +45 76 32 35 00 . [tresu@tresu.com](mailto:tresu@tresu.com)

# TRESU

Sign up on [tresu.com](http://tresu.com) and stay connected  
[www.tresu.com](http://www.tresu.com)